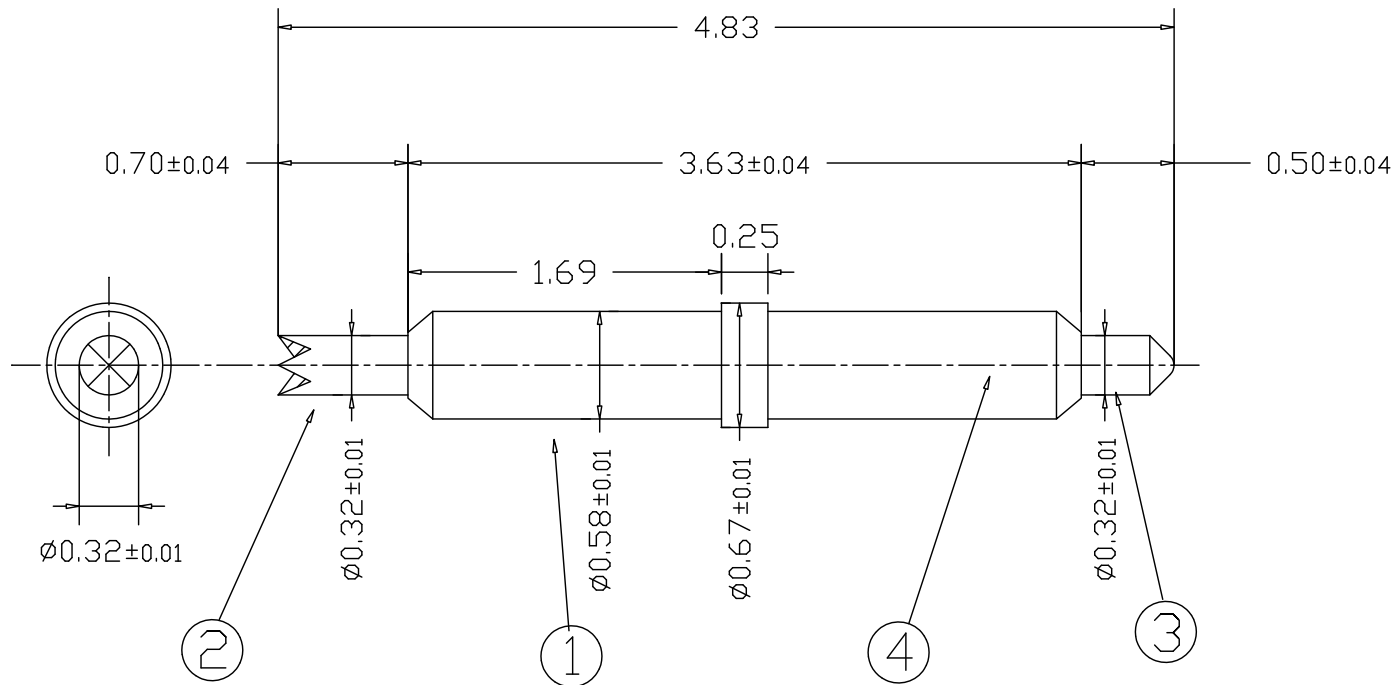


ITEM	PART NO	DESCRIPTION	MATERIAL	PLATING
①	SBX4.83CE-B	BARREL	BS	Au
②	SBX4.83CC-PA	PLUNGER A	SK-4	Silvaco
③	SBX4.83CC-PB	PLUNGER B	BeCu	HARDENING Au
④	SBX4.83CEH-SP	SPRING	For High temp	Au
MARK	DESCRIPTION OF REVISION		DATE	NAME



(Note)

1.Max Stroke 0.7 mm.

2.Recommended Contact force : 37gf at 0.6 mm. stroke

DESIGNED Yoshida	TITLE ASSEMBLY DRAWING		
CHECKED	SIZE A4	DWG NO. SBX4.83CCH	△
APPROVED S.Izumi	SCALE	Link-MicRo' Co.,Ltd..	
DRAWN 2005.10.06			