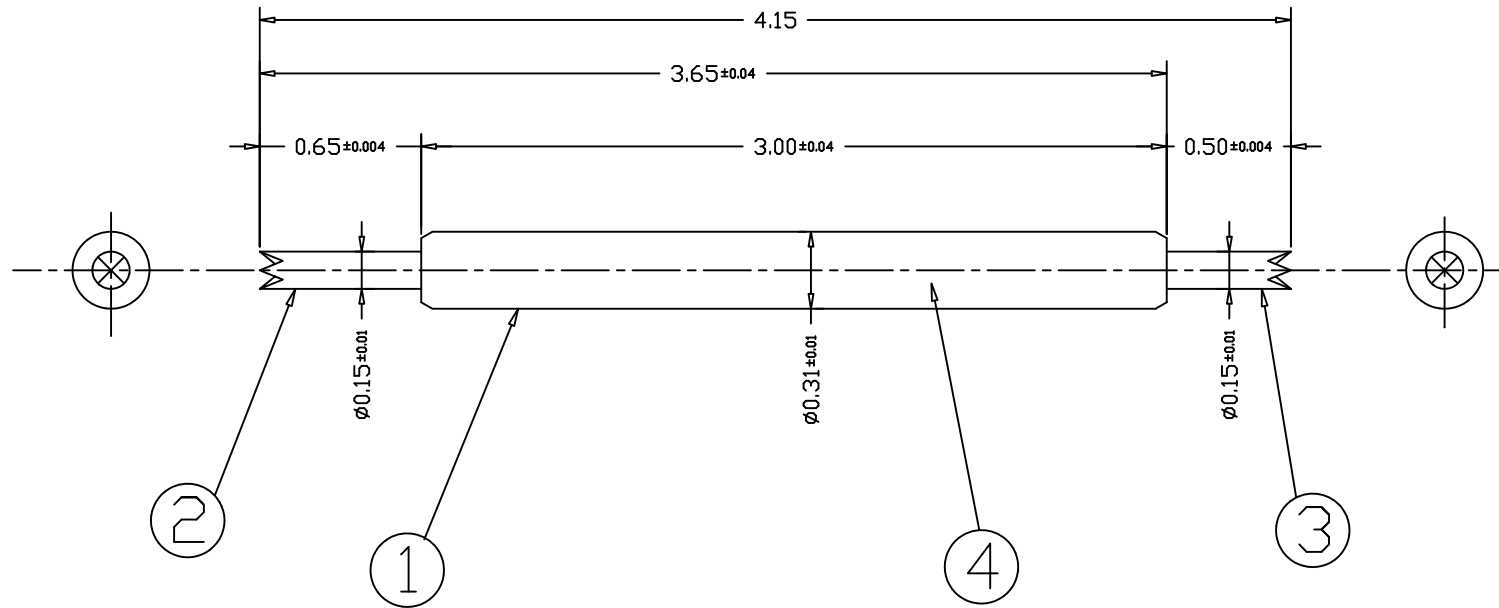


| ITEM | PART NO                 | DESCRIPTION | MATERIAL | PLATING      |
|------|-------------------------|-------------|----------|--------------|
| ①    | SBT4.15AA-B             | BARREL      | PB       | Au           |
| ②    | SBT4.15AB-PA            | PLUNGER A   | BeCu     | HARDENING Au |
| ③    | SBT4.15AA-PB            | PLUNGER B   | BeCu     | HARDENING Au |
| ④    | SBT4.15AA-SP            | SPRING      | SWP H/T  | Au           |
| MARK | DESCRIPTION OF REVISION |             | DATE     | NAME         |
|      |                         |             |          |              |



(Note)

- 1. Max Stroke 0.60 mm
- 2. Recommended Contact force : 20gf at 0.40 mm. stroke

|            |                  |                       |   |
|------------|------------------|-----------------------|---|
| DESIGNED   | TITLE            |                       |   |
| CHECKED    | ASSEMBLY DRAWING |                       |   |
| APPROVED   | SIZE             | DWG NO.               | △ |
| S.Izumi    | A4               | SBT4.15AB             |   |
| DRAWN      | SCALE            | Link-MicRo' Co.,Ltd.. |   |
| 2007.11.05 |                  |                       |   |